



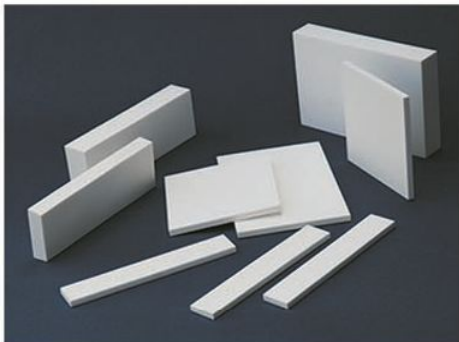
Alumina Ceramic Tiles

Chemshun wear resistant ceramic lining tiles include 92% Al₂O₃ series, 95% Al₂O₃ series and Al₂O₃+ZrO₂ composition series, can effectively protect your equipment /machines against wear, wherever abrasive materials are mined, transported and processed, especially in the industries of mining, primary steel, fire power plant, cement, port etc. Chemshun lining tiles help user reduce their downtime and improve their productivity.

Chemshun could afford customers the optimum lining tiles accommodate the detailed equipment wear protection demand. This adapts all the lining tiles totally meet the application. Chemshun ceramic lining tiles include: plain tile, weldable tile, trapezoidal tile, curved & lock tile, and engineering tile with special geometries.



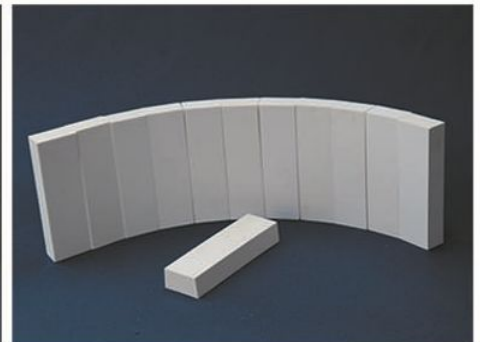
Alumina Ceramic Tiles
Alúmina de cerámica



Alumina Ceramic Plain Tiles
Azulejo de cerámica alúmina plain



Alumina Ceramic Weldable Tiles
Azulejo de cerámica alúmina soldable



Alumina Ceramic Trapezoidal Tile
Alúmina de cerámica azulejo de Trapezoide



Alumina Ceramic Curved Tiles with Self-lock
Teja curva cerámica alúmina con auto - Lock

Chemshun Ceramics Advantages

- Tailor Made Engineered Ceramics Available
- Accept OEM & ODM Wear Engineered Ceramics & Project
- Provide Professional Industrial Wear Consult and Solution
- Accept Small & Big Quantity Orders
- Delivery Fast

PINGXIANG CHEMSHUN CERAMICS CO.,LTD



in English



En español

Factory & Office Address: Non-metal Area of Shangliuyuan, Economic Development Zone
Pingxiang City, Jiangxi Province, P.R. China. Code 337000
Tel: 86-799-6790781, 2181002, 2181004 Fax: 86-799-6790785
Website: www.chemshun.com & www.chemshun-es.com Email: office@chemshun.com

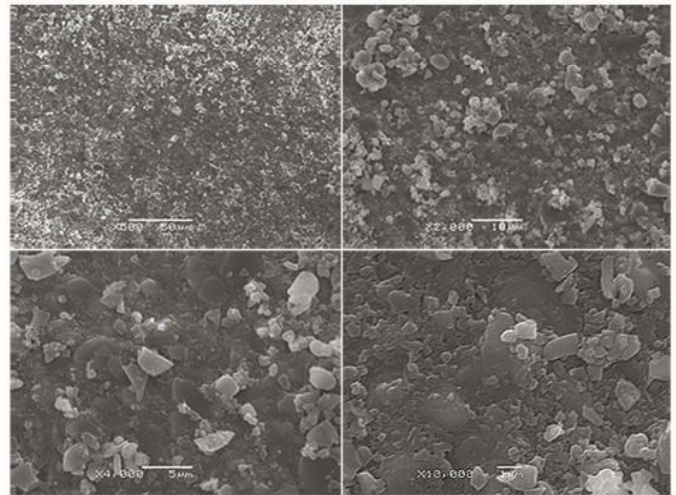


Advantages of Chemshun Wear Resistant Ceramic Lining Tiles

- Excellent abrasion resistance;
- Excellent impact resistance;
- Excellent hardness;
- Excellent corrosion resistance (resist the strong alkaline, strong acid slag, and liquefied materials);
- Excellent heat resistance (up to 1500°C);
- Easily and quickly installation;
- Smooth surface can be reduce barrage and friction coefficient to prolong the device working life;
- Low density reduce the lined equipment weight and improve the equipment working effectiveness.

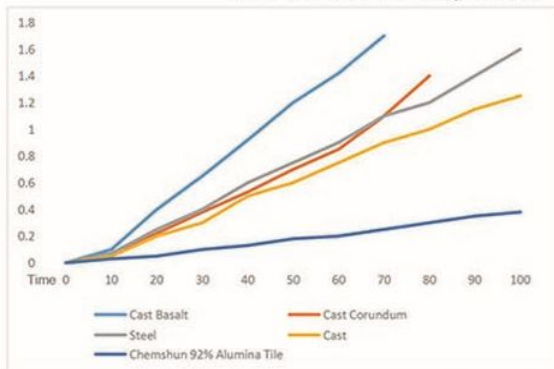
Micro Structure of 92% Alumina Ceramics

Fine size of the raw material makes the product superior in quality. Follows shows the micro structural of our finished ceramics under different magnifications. The interstructure of our ceramics is very compact and well-distributed.



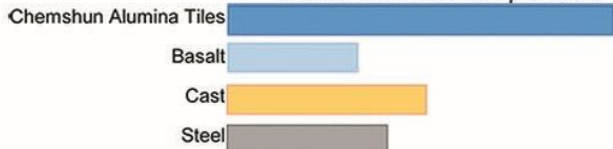
Comparasion of Different Materials

Wear Resistance Comparasion



The blast jet wear testing prove: Chemshun alumina lining tiles wear resistance is excellent and much better than the cast basalt, cast corundum, steel, cast and other hardfaced materials.

Vickers Hardness Comparasion



The hardness testing prove: Chemshun alumina lining tiles Vickers hardness is much better than the other material Basalt, Cast, Steel. Now Chemshun alumina lining tiles as the wear resistance materials are popular in the market.

Technical Datas

| Properties | Unit | CS 92 I | CS 92 II | CS 95 |
|--|------------------------|---------|----------|-------|
| Al ₂ O ₃ | % | 92 | 92 | 95 |
| ZrO ₂ | % | - | - | - |
| Density | g/cm ³ | 3.60 | 3.60 | 3.65 |
| Densidad | g/cm ³ | 3.60 | 3.60 | 3.65 |
| Water Absorption | % | 0 | 0 | 0 |
| Absorción de agua | % | 0 | 0 | 0 |
| Flexural Strength | Mpa | 270 | 300 | 320 |
| Resistencia a la flexión | Mpa | 270 | 300 | 320 |
| Moh's Hardness | Grade | 9 | 9 | 9 |
| Dureza de Moh | Grade | 9 | 9 | 9 |
| Rockwell Hardness | HRA | 80 | 85 | 87 |
| Dureza Rockwell | HRA | 80 | 85 | 87 |
| Vickers Hardness (HV10) | Kg/mm ² | 1000 | 1150 | 1200 |
| Dureza Vickers (HV10) | Kg/mm ² | 1000 | 1150 | 1200 |
| Fracture Toughness | Mpa.M ^{1/2} | 3-4 | 3-4 | 3-4 |
| Resistencia a la fractura | Mpa.M ^{1/2} | 3-4 | 3-4 | 3-4 |
| Thermal Expansion Coefficient (25-1000°C) | 1X10 ⁻⁶ /°C | 8.0 | 7.6 | 8.1 |
| La expansión térmica coeficien (25-1000°C) | 1X10 ⁻⁶ /°C | 8.0 | 7.6 | 8.1 |
| Maximum Operation Temperature | °C | 1450 | 1450 | 1500 |
| Temperatura máxima de operación | °C | 1450 | 1450 | 1500 |

PINGXIANG CHEMSHUN CERAMICS CO.,LTD



in English



En español

Factory & Office Address: Non-metal Area of Shangliuyuan, Economic Development Zone Pingxiang City, Jiangxi Province, P.R. China.Code 337000

Tel: 86-799-6790781,2181002,2181004 Fax: 86-799-6790785

Website: www.chemshun.com & www.chemshun-es.com Email: office@chemshun.com



Installation Methods of Alumina Tiles

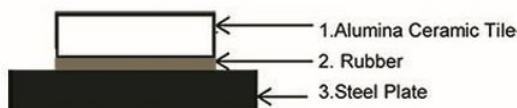
Different shapes of alumina tiles, the installation methods are different. For example, the alumina plain tile is normally pasted on the surface of the facility directly by epoxy resin adhesive or cement, and the weldable tile is installed on the surface of facility by welding and glue, etc.



Pastable Ceramic



Weldable Ceramic



Rubber Ceramic

Installation Guide of Alumina Tiles



1. Cleaning the device surface first.
2. Mixing the epoxy resin adhesive as per requested proportion. The adhesive must be used up within 30 minutes after mixing.
3. Applying the mixed epoxy resin adhesive onto the back of the Chemshun ceramic tiles or by large installation areas direct on the steel construction.

Notice: Epoxy resin adhesive will be visible on top surface of the tiles, it is not necessary to clean the surface.

4. Carefully put the Chemshun ceramic tiles on the casing and press the welding washer (welding insert/welding metal) into the hole.
5. Welding :The normal welding washer (welding insert / welding metal) is cold rolled steel which can be plug welded using conventional welding procedures.
6. Place a little epoxy resin adhesive into the hole and then carefully press the ceramic plug (ceramic cap) into the adhesive.

*After 24 hours the adhesive is hardened up and the installation is ready to use.

Standard Size of Chemshun Alumina Tile

| Plain Tile | Weldable Tile | Trapezoid/Pipe Tile |
|-----------------|------------------|---------------------|
| 150x100xT6-50mm | 150x100xT13-50mm | 150x33/28x13mm |
| 150x75xT6-25mm | 100x75xT13-50mm | 150x50/46x25mm |
| 150x50xT6-25mm | 100x100xT13-50mm | 150x53/49.3x13mm |
| 150x25xT6-25mm | 120x80xT13-25mm | 100x35/32x13mm |
| 100x100xT6-50mm | | 150x43/47x25mm |
| 100x75xT6-50mm | | 150x47/53x25mm |
| 100x50xT6-50mm | | 150x43/47x50mm |
| 100x25xT6-25mm | | |
| 120x80xT6-25mm | | |
| 75x25xT6-13mm | | |
| 50x50xT3-50mm | | |

PINGXIANG CHEMSHUN CERAMICS CO.,LTD



in English



En español

Factory & Office Address: Non-metal Area of Shangliuyuan, Economic Development Zone
Pingxiang City, Jiangxi Province, P.R. China. Code 337000

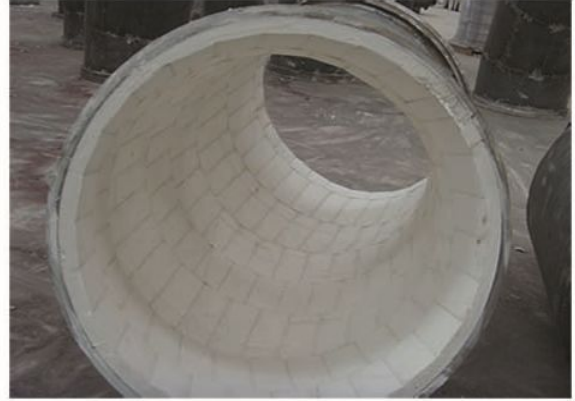
Tel: 86-799-6790781, 2181002, 2181004 Fax: 86-799-6790785

Website: www.chemshun.com & www.chemshun-es.com Email: office@chemshun.com



Application Reference for the Alumina Ceramic Tiles

With good wear resistance and impact resistance, the wear alumina ceramics are widely used in the mining, power plant, steel plant and cement industries. It can increase operational efficiencies by extending plant and equipment life, and reduce the unnecessary down-time and maintenance cost. The wear ceramic tiles play a great role in the excessive wear fields.



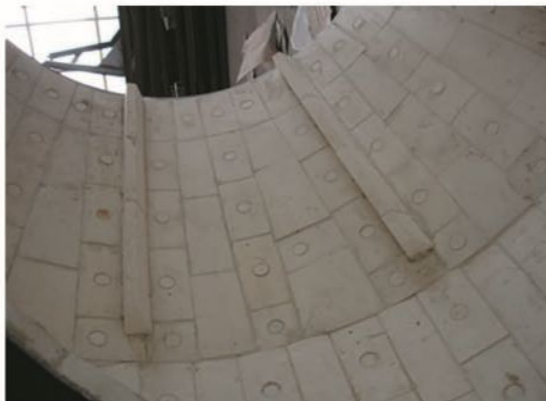
Pipe Tile Lining the Pipe
Pipe tile Revestimiento de la tubería



Plain Tile Lining the Hopper
Plain tile Revestimiento la tolva



Weldable Tile Lined Hopper
Weldable Tile lined tolva



Weldable Tile Lining the Big Pipe
Revestimiento de tuberías soldables azulejo grande

Application Ranges

| Industry | Parts |
|--------------|--|
| Mining | Crusher cone, sizing screen, transfer chute, scraper, pipe, drum pulley, cyclone separator, etc. |
| Power Plant | Coal feeder, collector pan, fan runner, chute, elbow, silos. |
| Steel Plant | Fan housing & blades, screen, feed drum, bunker, hopper, slurry pipeline. |
| Cement Plant | Clinker discharge, cyclone, chute, conveyor, feed hopper, crusher. |
| Others | Port, nozzle. |

PINGXIANG CHEMSHUN CERAMICS CO.,LTD



in English



En español

Factory & Office Address: Non-metal Area of Shangliuyuan, Economic Development Zone
Pingxiang City, Jiangxi Province, P.R. China. Code 337000
Tel: 86-799-6790781, 2181002, 2181004 Fax: 86-799-6790785

Website: www.chemshun.com & www.chemshun-es.com Email: office@chemshun.com